

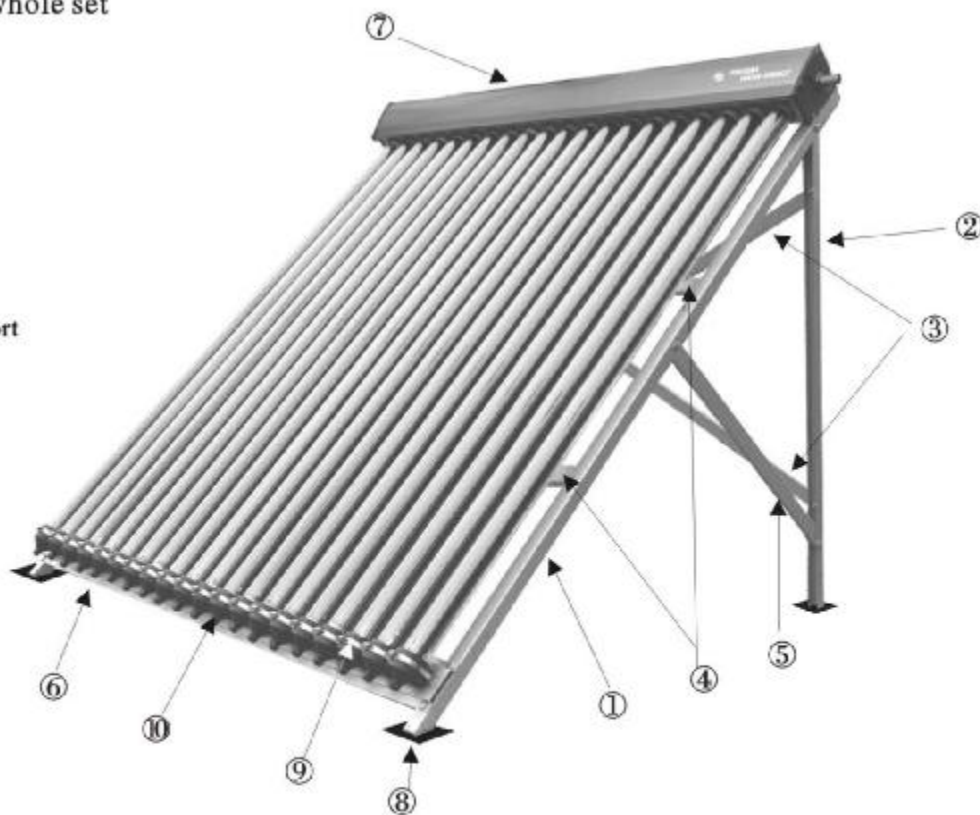
Installation Manual



Collector of separate system

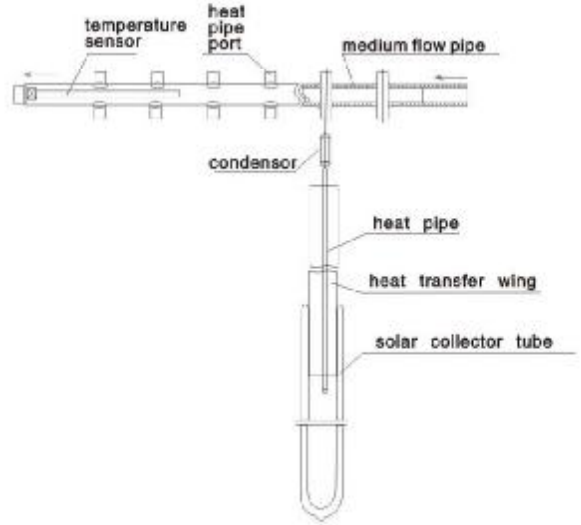
1、Installation of whole set

- ① Front support
- ② Rear support
- ③ Cross bracket
- ④ Transverse pole
- ⑤ Catercorner support
- ⑥ Tube support
- ⑦ Manifold tank
- ⑧ Fixation foot
- ⑨ Loop
- ⑩ Tail support
- ⑪ Bolt
- ⑫ Screw cap



3、 The principle of solar collector

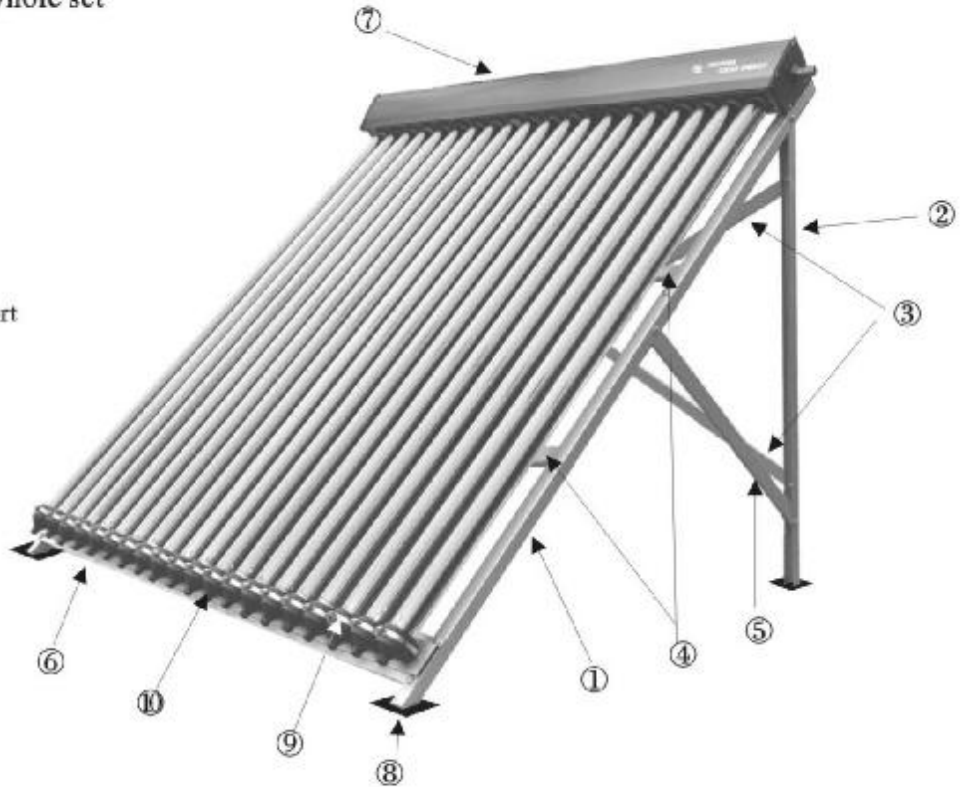
Vacuum tube is composed of inner and outer glass pipe,inspritory layer,vacuum space,inspritory membrane.The surface of inner and outer glass tube is plated with selective absorption layer ,the layer absorb the solar energy and turn it into heat energy ,aluminium wing pass the heat energy to the heat pipe,the liquide medium in the heat pipe is heated by the heat energy,then turns into the gas medium,the gas medium flows up to the top of the heat pipe(condensor)and transfer the energy to the copper manifold header heat pipe,at the same time the gas medium turns into the liquid when cooled,then flows down.Keep recycling,the carrier in the system will become hot at last.



-3-

1、 Installation of whole set

- ① Front support
- ② Rear support
- ③ Cross bracket
- ④ Transverse pole
- ⑤ Catercorner support
- ⑥ Tube support
- ⑦ Manifold tank
- ⑧ Fixation foot
- ⑨ Loop
- ⑩ Tail support
- ⑪ Bolt
- ⑫ Screw cap



-1-

4、Link front support with rear support

Use ① M8 bolts, ② M8 screw caps to connect
① front support with ② rear support



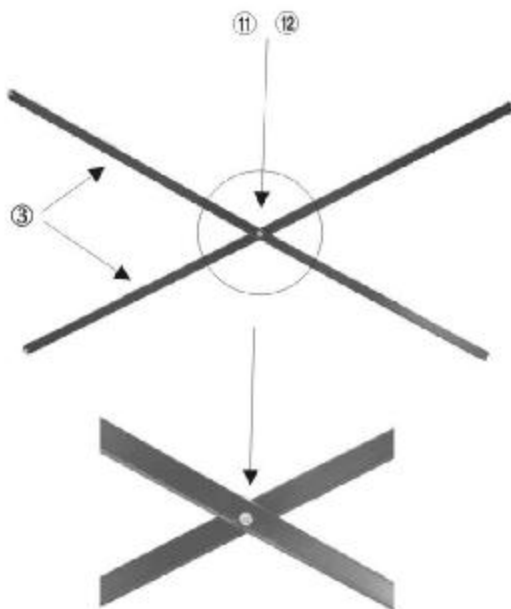
5、Assemble the other side in same procedure

The whole set frame can stand like below picture



6、Assemble the Cross brackets

link two ③ Cross brackets with one ① M8 bolt,
and one ② M8 screw cap



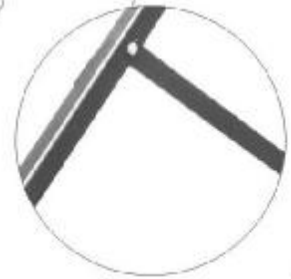
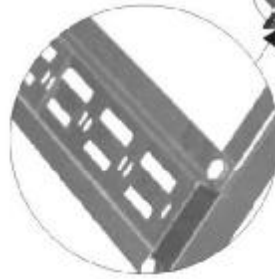
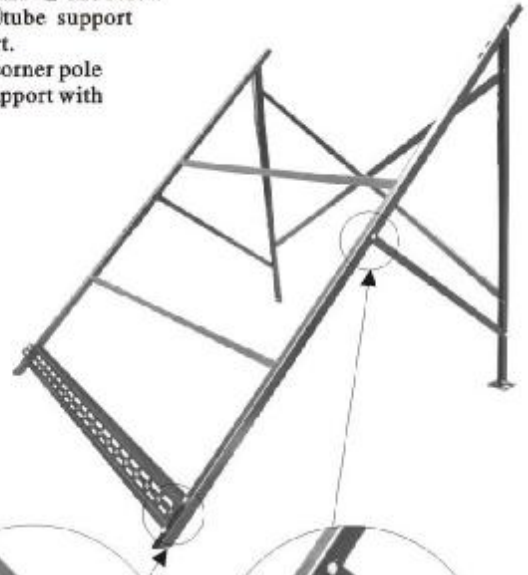
7、 Link Cross bracket and rear support



Use ① M8 bolts and ② M8 screw caps to connect ③ Cross bracket with ② rear support. Then connect ④ transverse pole with ① front support by ① M8 bolts and ② M8 screw caps

8、 Link tube support with front support

Use ① M8 bolts and ② M8 screw caps to connect ⑥ tube support with front support. Then use ⑤ catercorner pole connect ① front support with ② rear support.



9、 Link manifold tank with frame



Use ① M8 bolts and ② M8 screw caps attached on the ⑦ manifold tank to connect manifold tank with frame

10、Assemble of heat pipe and vacuum tube

- Step1: Insert heat pips into vacuum tube,keep them in the same line.
- Step2: coat the condensationend with heat paste grase ,using for quick transmission of heat .
- Step3: cover the end of vacuum tube with Tail support

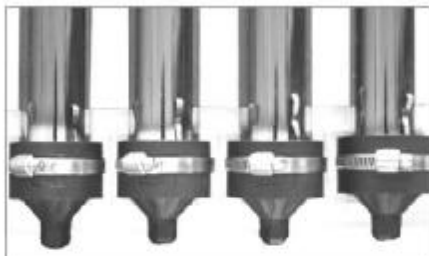


Heat paste grase

-8-

11、Assemble the loop

Insert the ⑨loop into the tube support ,and fix the loop ⑩with screwdriver

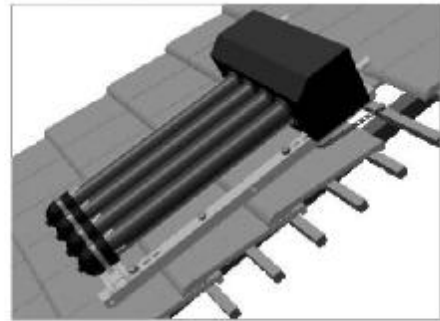
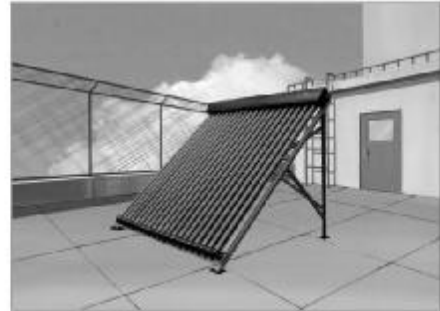


12、Fix the tail support

-9-

13、 Warning of Installation and Application

1. Before installing the solar collector, the solar collector should face the south, with variation from 10 degree to 15 degree to southwest. Be sure there is no covering on both sides of the collector and its top.
2. The solar collector is fixed to building plate firmly to make sure safety.
3. For the sake of security, please don't use the hot water until cut off the power supply. You are forbidden to use the hot water with the power supply on. All electrical outlet must be earthed credibly.
4. The getter fixed at the end of the vacuum tube should appear the shape of mirror surface. Once it appears mist, it means the air has entered into the tube. The tube should be changed in time.
5. In lighting storm weather, the solar water heater is forbidden to be used and the plug must be taken away from power supply if there is heater element in the solar water heater.
6. The pipeline outside must be dealt with heat preservation.
7. Don't change the solar collector's structure at ease.
8. If the solar water heater is not in the protecting scope of lighting conductor fixed in the buildings, the user should add the lighting conductor.



-10-

14、 Installation sketch map of separate pressurized solar water heater

